

WOKINGHAM WINTER

CARNIVAL

ONCE

UPON A TIME



SUNDAY 27TH NOVEMBER 2016

11AM TO 5.30PM



Welcome everyone to the 2016 Wokingham Winter Carnival. This year's theme is "Once Upon a Time" which the organising committee hope will inspire you to dress up on Carnival Day in a costume that reminds you of a famous character from one of your favourite story books.

The committee is always on the lookout for new members with fresh ideas so if you would like to get involved in helping to run the Winter Carnival please get in touch through the website: www.wintercarnival.org.uk

The Carnival would not take place without the effort of a dedicated group of local residents, charitable organisations, local businesses and the Town Council. Without that support events such as the Winter Carnival would simply not take place. Your commitment can be as little as 2 hours so please do make contact with us so that this great tradition can be kept alive.

You can get in touch by going to our website or by telephoning 07748701346.

On behalf of the organising committee I wish you a very Merry Christmas and a Happy and Prosperous New Year.

Dave Donaldson

Chairman – Wokingham Winter Carnival Committee.

www.wintercarnival.org.uk

Make sure you don't miss next year's Carnival by putting the date in your diary now.

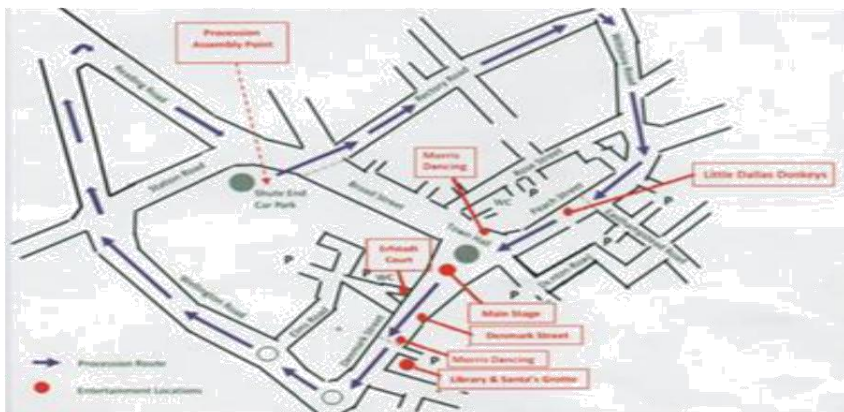
Sunday 26th November 2017



Carnival Procession

Don't forget to watch the magical Carnival Procession as dusk falls.

The parade leaves Shute End at 4pm and winds its way through town, arriving at the Town Hall at approx. 4.30pm, where Santa will leave the parade to join the Carol Singing in the Market Place



Parking
£1.00 all
day Sunday

Market Place Main Stage

A range of entertainment throughout the day courtesy of Berkshire Maestros.



| | |
|-------|--|
| 11.0 | Whistling Woodwind |
| 11.15 | Murphy Brass Band |
| 11.35 | Rock School |
| 12.5 | Sparke Band |
| 12.25 | BWCB Secondwind |
| 12.55 | Sing for Fun |
| 1.15 | Vivaldi Strings |
| 1.35 | Training Band |
| 1.55 | Percussion Ensemble |
| 2.10 | Concert Band |
| 3.0 | Mozart Strings |
| 3.20 | Andre Band |
| 3.40 | Youth Brass |
| 4.0 | Parade |
| 4.30 | Carnival Procession arrives at the Town Hall |
| 4.40 | Carols led by Reverend Anna Harwood |

Santa's Grotto in the Library

| | |
|-------------|--|
| 11-3pm | Visit Father Christmas at the Home Start Santa's Grotto |
| 11-12.00 | Free Mini Maestros Music Workshops |
| 11.30-12.30 | The Queen of The North Mountain- The Snow Queen and her sister are off On a journey and are visiting you in your Library, they will be singing the well – Loved classics which all the children Admire as well as telling you their story and offering a bit of Christmas magic. All ages welcome £5.00 charge per Person 11.15 – 12.15. Places must Be booked Tel 01189 781368 |
| 12-12.20 | Clarinet Group |
| 2.30-3.20 | Recorders & Young Choir |

Cards for good causes for sale in our Cafe Wokingham Library Coffee shop open 11am to 3.30pm

Street Market

Charity, craft and trade stalls in Peach Street, Broad Street, Denmark Street and Market Place.

Watch out around Town for the Clowns, Jugglers, Stilt Walkers and Walkabout Acts from Circus Scene.

Peach Street

The Little Dallas Donkeys return by popular demand to the end of Peach Street. Come meet and make friends with our very own Christmas Donkeys

Erfstadt Court

| | |
|------|---------------------|
| 12.0 | Fun Magic Show |
| 1.30 | Punch and Judy Show |
| 3.0 | Fun Magic Show |

Denmark Street

| | |
|-------|----------------------------|
| 12.30 | Barrel Organ Display |
| 1.0 | Comedy Jugglers |
| 1.30 | The Royal Castle Jazz Band |
| 2.0 | Meet Elf & The Toymaker |
| 2.40 | Reading Scottish Pipe Band |

Morris Dancing

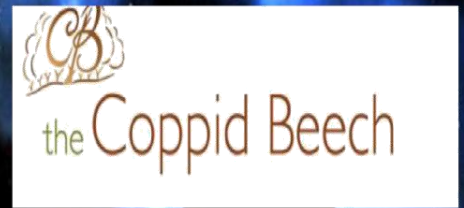
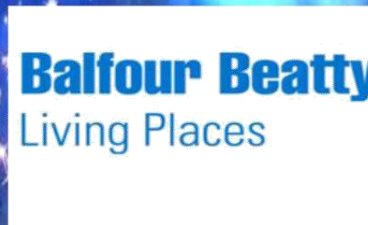
There will be dancing throughout the day outside Boots and near the Library on Demark Street From Berkshire Bedlam, Borderline, Customs and Exiles, Fools Gambit, OBJ and Taepa's Tump



OUR THANKS



The Winter Carnival would not be possible without the support and sponsorship of some fantastic local businesses, groups & societies. This support enables us to keep this a 'FREE EVENT' and donate all monies raised throughout the day to wonderful local charities.



If you are interested in becoming a sponsor for 2017 Wokingham Winter Carnival please get in touch with us

The Carnival is organised entirely by volunteers. If you would like to find out more about getting involved with helping organise the event or offer an extra pair of hands on the day, we'd love to hear from you. Please contact us via our web site.

www.wintercarnival.org.uk

Festive Afternoon Tea



CB

£14.95
per person

WWW.COPPIDBEECH.COM | 01344 303333

SALES@COPPIDBEECH.COM

Join us for Festive Afternoon Tea at the **Coppid Beech hotel** during December and enjoy a selection of dainty sandwiches, including roast turkey and cranberry sauce, homemade scones served with strawberry jam and clotted cream, mince pies, festive cakes and your choice of tea or coffee.

* ADD A GLASS OF *Fizz* **£18.95**
per person

Available throughout December. Pre-booking required. Subject to availability.
T's and C's apply. Not available 24-26 December or New Year's Eve.

Great New Homes

in the Wokingham area

Ask about our
**Home
Exchange
scheme***



The Chester

Four bedroom home



The Winchester

Five bedroom home

Emmbrook Place

Matthewsgreen Road, Wokingham RG41 1JT

2, 3, 4 and 5 bedroom homes

Open daily, 10am to 5pm

0118 418 1022

Hatchwood Mill

King Street Lane, Winnersh RG41 5AZ

2, 3, 4 and 5 bedroom homes

Open daily, 10am to 5pm

0118 418 1341



We also offer
Help to Buy
5% deposit
needed*

bovishomes.co.uk

**BOVIS
HOMES**

WINDOWS • DOORS • CONSERVATORIES

Window Problems?



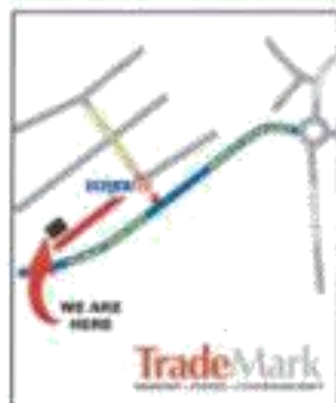
**FREE
HEALTH
CHECK**
CALL
0800 30 50 30
TODAY!

**EXTENDING THE
LIFE OF YOUR OLD
CONSERVATORY &
WINDOWS COULD SAVE
YOU A SMALL FORTUNE,
THE WINDOW DOCTOR IS
HERE TO HELP.**

**CALL 0800 30 50 30 TODAY
TO BOOK A FREE HEALTH
CHECK SURVEY.**

- ◆ Misted broken sealed units.
- ◆ Window lock hinge & handle replacement.
- ◆ Door-lock handle and furniture replacement.
- ◆ Window and door re-alignment adjustment.
- ◆ Cat / Dog flaps fitted.
- ◆ Conservatory leaks / Storm damage.
- ◆ Conservatory roof upgrades polycarbonate & glass.
- ◆ Insurance & expired guarantee repairs.

**GET A FREE ONLINE ESTIMATE AND SAVE 10% WITH THIS FLYER!
WWW.TRADEMARKWINDOWS.CO.UK**



*TradeMark products are
now Greener...Clearer...with
a Better Choice and Better
Certified Energy Savings. That's
TradeMark's A+ Guarantee.*

**The TradeMark
WINDOW
Doctor**
0800 30 50 30
www.trademarkwindows.co.uk

SHOWROOM OPEN: MON-FRI: 9-5, SAT: 10-4 Tel: 0118 969 9322 (Next to Screwfix)
Unit 20, Headley Park 10, Headley Road East, Woodley RG5 4SW

Wokingham

Winter Carnival

tta

Happy Holidays
from TTA

Proud to sponsor
the Wokingham
Winter Carnival 2016

Experience the magic of TTA
Bringing your event to life



www.tta.live / 01189 369100

Gardeneer®

THE LOCAL
GARDENING
SERVICE OF CHOICE

Happy gardening from Tony and Gwynneth Hewetson.

Lawn care

- Hollow tine and feed your lawn to help it through the winter

Landscaping

- Check your fences are strong enough for the winter gales

Regular garden maintenance

- Mow, weed and prune

Tidy ups and turfing

- End of the season tidy up and hedgecutting



0118 989 2627 • info@gardeneer.co.uk • www.gardeneer.co.uk
Credit Cards accepted

Tithe Barn
Chequers Lane
Eversley
RG27 0NT

0118 988 5955
0118 973 5199



Rose Street
Wokingham
RG40 1UX

0118 977 4550

Mimis

HAIR SALON

With over 25 years experience, Maria and her team would like you to enjoy a calm and friendly atmosphere at one of their two salons.

Let our skilled team of cutting and colour professionals revitalise your hair with a new or classic style.



www.mimishairsalon.co.uk

WOKINGHAM ELECTRICAL & LIGHTING SUPPLIES

*for all
your
electrical
needs*

*your local independent
electrical and lighting
supplier*

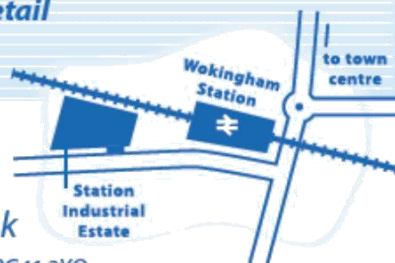
*Electrical Fixtures & Fittings
Lighting & Design
Lamp Disposal & Lighting Conversion
Fire Warning Systems
Heating & Ventilation
Engraving Service
Tools & Test Equipment
Trade & Retail*

5% OFF
WHEN YOU
PRESENT THIS
ADVERT DURING
PURCHASE*

0118 989 3444

Fax: 0118 989 3888 sales@wok-els.co.uk

Unit 8 Station Industrial Estate, Oxford Road, Wokingham, Berkshire, RG41 2YQ



*Offer only valid for homeowners.
T&C's apply. See instore for details



Celebrate Christmas & New Year's Eve in style at the 4 Star Merit 2 AA Rosette Holiday Inn Reading M4 Jct10

Festive Lunches and Dinners from £22.95 per person - Superb 2 or 3 course Lunch or Dinner in the stylish 2 AA Rosette Caprice Restaurant including Novelties.

Sparkling Party Nights from £29.95 per person - 3 course Festive Meal, Tea & Coffee, Christmas Novelties & Disco.

Extravagant Christmas Day Lunch from £69.00 per person (Children up to 13 years £35.00) Treat yourself and your loved ones to a very special day. Enjoy an exceptional 5 Course Christmas Day Lunch in our vibrant 2 AA Rosette Caprice Restaurant. Start the celebration with a chilled glass of Champagne on arrival whilst enjoying music by our resident pianist, followed by Christmas Lunch with crackers and a visit from Santa.

New Year's Eve Gala Dinner Dance £79.00 per person (Adults and Children aged 15+ only) Welcome in the New Year in style and plan the perfect party for all your friends and family. Enjoy music by our Resident Pianist, followed by a spectacular 6 Course Gala Dinner and dancing until the early hours, with a chilled glass of Champagne to bring in the New Year!

Enjoy a **New Year's Eve 3 Course Set Dinner** in the 2 AA Rosette Caprice Restaurant whilst enjoying wonderful music by the hotel's resident Pianist, Razvigor Popov. Children aged 5+ are welcome to dine in the Restaurant. **£39.95 pp (Children up to 13 years £25.00)**

Christmas 2 or 3 night residential package from £133.00 pp sharing a Double / Twin Room for 2 nights (24th - 25th / 25th - 26th December).

New Year's Eve Residential Package from £124.50 pp Sharing a Double / Twin Room including: New Year's Eve Gala Dinner Dance, Accommodation, full English Breakfast & use of the Hotel's superb Esprit Spa & Wellness facilities with 19m indoor Pool, Sauna, Steam Room & Life Fitness Gym.

Please contact our Events Team for more information:

T: 0118 944 4230 | E: events1@hireadinghotel.com | W: www.hireadinghotel.com

Holiday Inn Reading M4 Jct10, Wharfedale Road, Winnersh, Reading, RG41 5TS



Holiday Inn



THE GIG HOUSE

